

Summary of Key Water Quality Issues Along Marmaton River

Lower Marmaton River Station located below Ft Scott

Upper Marmaton River Station located above Ft Scott

Flows taken from USGS Gage at Marmaton

Lower Marmaton	# Samples < 5 ppm DO	Avg TP	Avg TSS	Avg Q
1985-2001	35 out of 132 samples	207 ppb	77 ppm	303 cfs
2002-2008	10 out of 36 samples	135 ppb	34 ppm	241 cfs
Upper Marmaton	# Samples < 5 ppm DO	Avg TP	Avg TSS	Avg Q
1990, 1994, 1998, 2000	6 out of 36 samples	84 ppb	23 ppm	344 cfs
2002 & 2006	3 out of 13 samples	71 ppb	14 ppm	123 cfs
E coli Bacteria				
Lower Marmaton	Overall 2003-2008	147 counts		
Lower Marmaton	Primary Rec Season	180 counts		
Upper Marmaton	Overall 2006	28 counts		

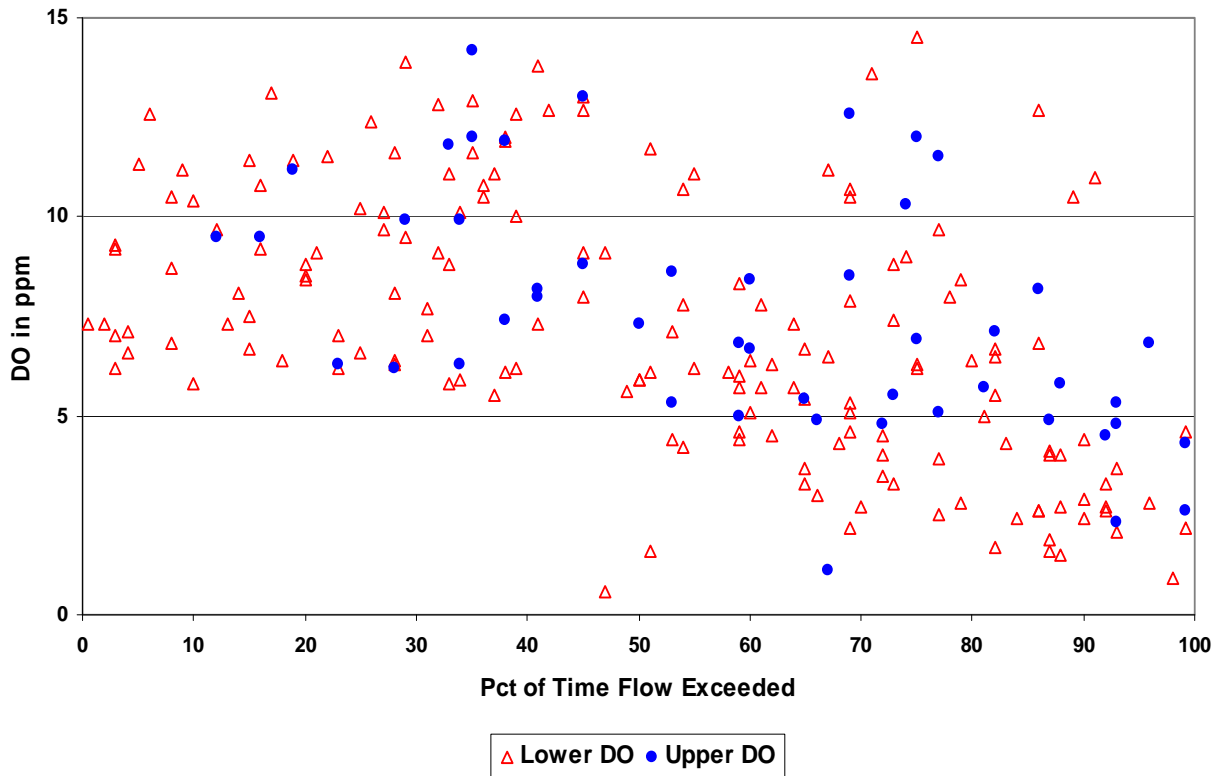
DO is dissolved oxygen

TP is total phosphorus

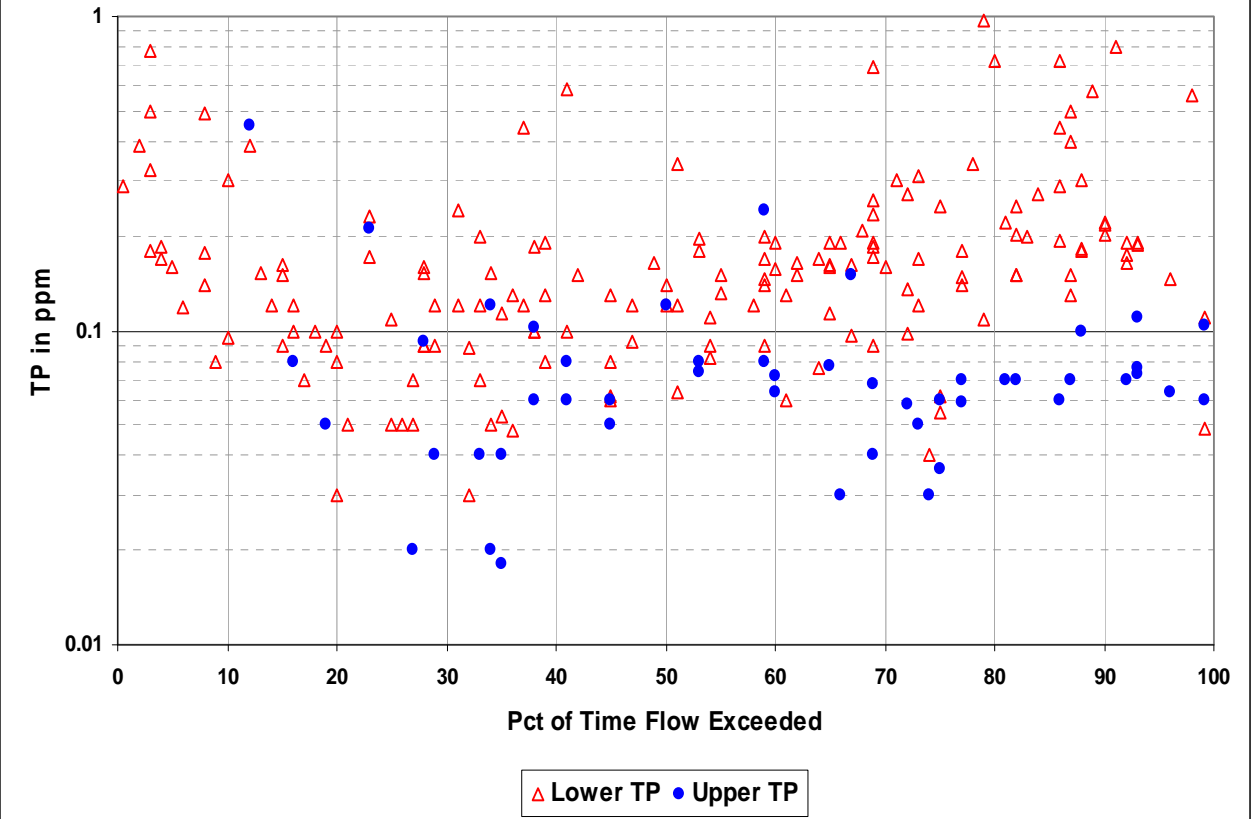
TSS is total suspended solids

Q is flow rate

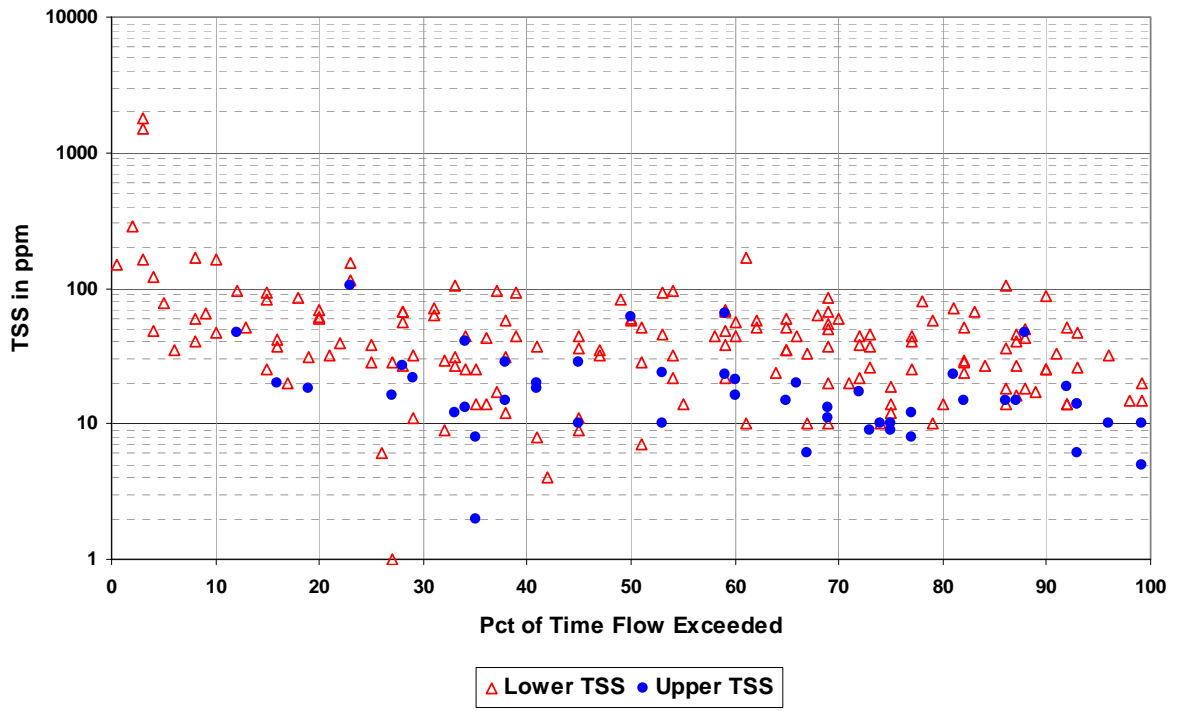
Marmaton River Dissolved Oxygen



Marmaton River Total Phosphorus



Marmaton River Total Suspended Solids



Marmaton River E coli Bacteria

